

S.M.A.R.T. DISTRICT (FORMERLY N.W.P.R.R.)

WOODLAND AVENUE

U.S. HIGHWAY 101

LEGEND

	BOUNDARY LINE
	EASEMENT LINE
	ADJACENT LINE
	RIGHT-OF-WAY
	ORIGINAL LOT LINE PER 2 RSM 97

TITLE REPORT

FIRST AMERICAN TITLE COMPANY
ORDER NO. 0131-62707660
DATED JUNE 1, 2023

ASSESSOR'S PARCEL NUMBER:

- 018-074-16
- 018-075-28
- 018-081-04
- 018-082-10
- 018-082-12
- 018-082-13
- 018-083-01
- 018-083-09
- 018-084-12
- 018-085-23
- 018-086-17
- 018-086-18

AREA:

- 1.95 AC± (APN 018-074-16)
- 0.84 AC± (APN 018-075-28)
- 1.38 AC± (APN 018-081-04)
- 0.12 AC± (APN 018-082-10)
- 0.57 AC± (APN 018-082-12)
- 0.49 AC± (APN 018-082-13)
- 0.12 AC± (APN 018-083-01)
- 0.35 AC± (APN 018-083-09)
- 1.28 AC± (APN 018-084-12)
- 1.03 AC± (APN 018-085-23)
- 0.19 AC± (APN 018-086-17)
- 0.60 AC± (APN 018-086-18)

NOTE:

ORIGINAL LOTS PER 2 RSM 97 SHOWN FOR REFERENCE ONLY.

EASEMENT KEY:

SLOPE EASEMENTS IN FAVOR OF MARIN COUNTY PER THE FOLLOWING DOCUMENTS:

- ① 1425 OR 131
- ② 1425 OR 589
- ③ 1663 OR 286
- ④ 1803 OR 585
- ⑤ 2029 OR 430

PERMANENT RIGHT OF WAY EASEMENT IN FAVOR OF MARIN COUNTY PER THE FOLLOWING DOCUMENT:

- ⑥ 1663 OR 286

LINE TABLE

NO	BEARING	LENGTH
L1	N48°09'15"E	20.00'
L2	N41°50'45"W	24.99'
L3	N48°09'15"E	20.34'
L4	N48°09'15"E	20.13'
L5	N48°09'15"E	20.34'
L6	N21°22'21"W	12.14'

CURVE TABLE

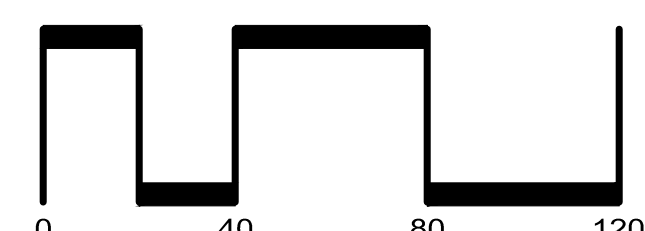
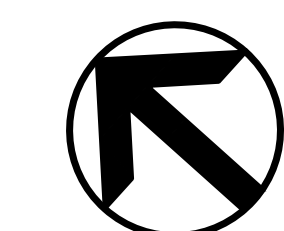
NO	RADIUS	DELTA	LENGTH
C1	370.00'	3°52'53"	25.06'
C2	350.00'	4°08'22"	25.29'



BASE MAP EXHIBIT

MARIN COUNTY A

MARIN COUNTY CALIFORNIA
SCALE: 1"=40' DATE: FEBRUARY 16, 2024



SAN RAMON • (925) 866-0322
ROSEVILLE • (916) 788-4456
WWW.CBANDG.COM
CIVIL ENGINEERS • SURVEYORS • PLANNERS

H0374-000ACAD/EXHIBITS/03_BASE MAP EXHIBIT.DWG



LEGEND

- BOUNDARY LINE
- EASEMENT LINE
- ADJACENT LINE
- RIGHT-OF-WAY
- ORIGINAL LOT LINE PER 2 RSM 97

TITLE REPORT

FIRST AMERICAN TITLE COMPANY
 ORDER NO. 0131-62707660
 DATED JUNE 1, 2023

ASSESSOR'S PARCEL NUMBER:

- 018-074-16
- 018-075-28
- 018-081-04
- 018-082-10
- 018-082-12
- 018-082-13
- 018-083-01
- 018-083-09
- 018-084-12
- 018-085-23
- 018-086-17
- 018-086-18

AREA:

- 1.95 AC± (APN 018-074-16)
- 0.84 AC± (APN 018-075-28)
- 1.38 AC± (APN 018-081-04)
- 0.12 AC± (APN 018-082-10)
- 0.57 AC± (APN 018-082-12)
- 0.49 AC± (APN 018-082-13)
- 0.12 AC± (APN 018-083-01)
- 0.35 AC± (APN 018-083-09)
- 1.28 AC± (APN 018-084-12)
- 1.03 AC± (APN 018-085-23)
- 0.19 AC± (APN 018-086-17)
- 0.60 AC± (APN 018-086-18)

NOTE:

ORIGINAL LOTS PER 2 RSM 97 SHOWN FOR REFERENCE ONLY.

EASEMENT KEY:

SLOPE EASEMENTS IN FAVOR OF MARIN COUNTY PER THE FOLLOWING DOCUMENTS:

- ① 1425 OR 131
- ② 1425 OR 589
- ③ 1663 OR 286
- ④ 1803 OR 585
- ⑤ 2029 OR 430

PERMANENT RIGHT OF WAY EASEMENT IN FAVOR OF MARIN COUNTY PER THE FOLLOWING DOCUMENT:

- ⑥ 1663 OR 286

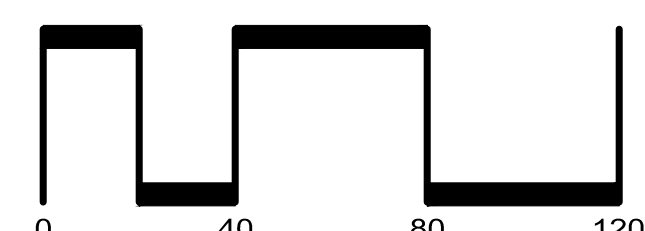
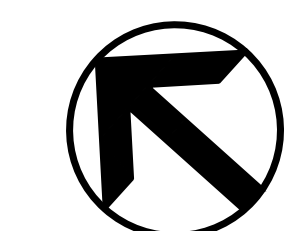
LINE TABLE		
NO	BEARING	LENGTH
L1	N48°09'15"E	20.00'
L2	N41°50'45"W	24.99'
L3	N48°09'15"E	20.34'
L4	N48°09'15"E	20.13'
L5	N48°09'15"E	20.34'
L6	N21°22'21"W	12.14'

CURVE TABLE			
NO	RADIUS	DELTA	LENGTH
C1	370.00'	3°52'53"	25.06'
C2	350.00'	4°08'22"	25.29'

BASE MAP EXHIBIT

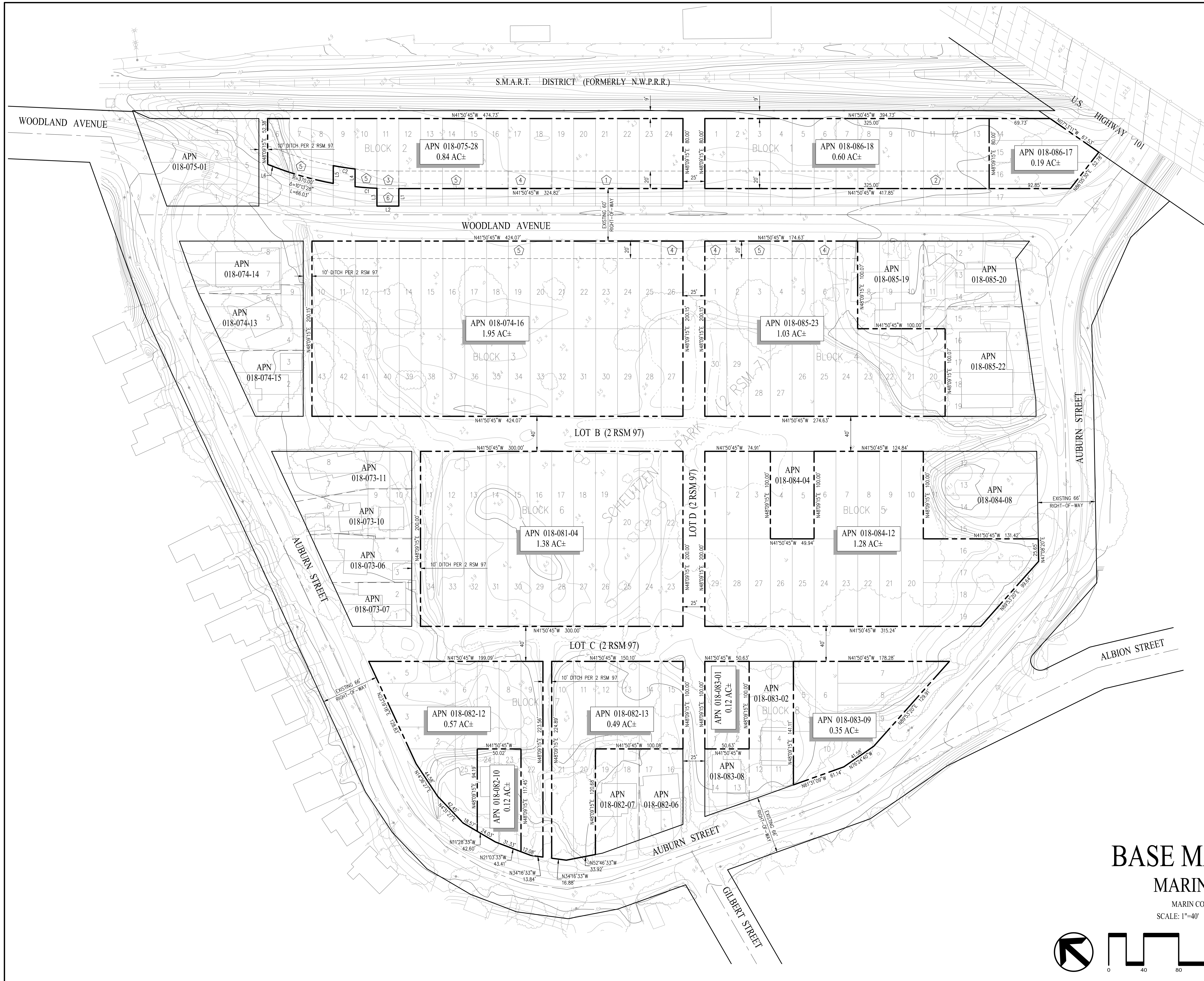
MARIN COUNTY A

MARIN COUNTY CALIFORNIA
 SCALE: 1"=40' DATE: FEBRUARY 16, 2024



SAN RAMON • (925) 866-0322
 ROSEVILLE • (916) 788-4456
 WWW.CBANDG.COM
 CIVIL ENGINEERS • SURVEYORS • PLANNERS

H:\3814-00\CAD\EXHIBITS\BASE MAP EXHIBIT\MARIN\BASE.MXD



LEGEND

	BOUNDARY LINE
	EASEMENT LINE
	ADJACENT LINE
	RIGHT-OF-WAY
	ORIGINAL LOT LINE PER 2 RSM 97

TITLE REPORT
 FIRST AMERICAN TITLE COMPANY
 ORDER NO. 0131-62707660
 DATED JUNE 1, 2023

ASSESSOR'S PARCEL NUMBER:

- 018-074-16
- 018-075-28
- 018-081-04
- 018-082-10
- 018-082-12
- 018-082-13
- 018-083-01
- 018-083-09
- 018-084-12
- 018-085-23
- 018-086-17
- 018-086-18

AREA:

1.95 AC± (APN 018-074-16)
0.84 AC± (APN 018-075-28)
1.38 AC± (APN 018-081-04)
0.12 AC± (APN 018-082-10)
0.57 AC± (APN 018-082-12)
0.49 AC± (APN 018-082-13)
0.12 AC± (APN 018-083-01)
0.35 AC± (APN 018-083-09)
1.28 AC± (APN 018-084-12)
1.03 AC± (APN 018-085-23)
0.19 AC± (APN 018-086-17)
0.60 AC± (APN 018-086-18)

NOTE:
 ORIGINAL LOTS PER 2 RSM 97 SHOWN FOR REFERENCE ONLY.

- EASEMENT KEY:**
- SLOPE EASEMENTS IN FAVOR OF MARIN COUNTY PER THE FOLLOWING DOCUMENTS:
- ① 1425 OR 131
 - ② 1425 OR 589
 - ③ 1663 OR 286
 - ④ 1803 OR 585
 - ⑤ 2029 OR 430
- PERMANENT RIGHT OF WAY EASEMENT IN FAVOR OF MARIN COUNTY PER THE FOLLOWING DOCUMENT:
- ⑥ 1663 OR 286

LINE TABLE

NO	BEARING	LENGTH
L1	N48°09'15"E	20.00'
L2	N41°50'45"W	24.99'
L3	N48°09'15"E	20.34'
L4	N48°09'15"E	20.13'
L5	N48°09'15"E	20.34'
L6	N21°22'21"W	12.14'

CURVE TABLE

NO	RADIUS	DELTA	LENGTH
C1	370.00'	3°52'53"	25.06'
C2	350.00'	4°08'22"	25.29'

BASE MAP EXHIBIT

MARIN COUNTY A

MARIN COUNTY CALIFORNIA
 SCALE: 1"=40' DATE: FEBRUARY 16, 2024

SAN RAMON • (925) 866-0322
 ROSEVILLE • (916) 788-4456
 WWW.CBANDG.COM
 CIVIL ENGINEERS • SURVEYORS • PLANNERS

H0374-000ACAD/EXHIBITS/03_BASE MAP EXHIBIT.DWG