

REV	DATE	DESCRIPTION
10.05.2015		PLANNING SUBMITTAL SET
05.16.2016		PLANNING RESUBMITTAL SET
01.31.2020		PLANNING / MP RESUBM SET

THE SEMINARY

201 SEMINARY DRIVE
MILL VALLEY, CA 94941

FOREST MANAGEMENT AND TREE REMOVAL PLAN
EAST

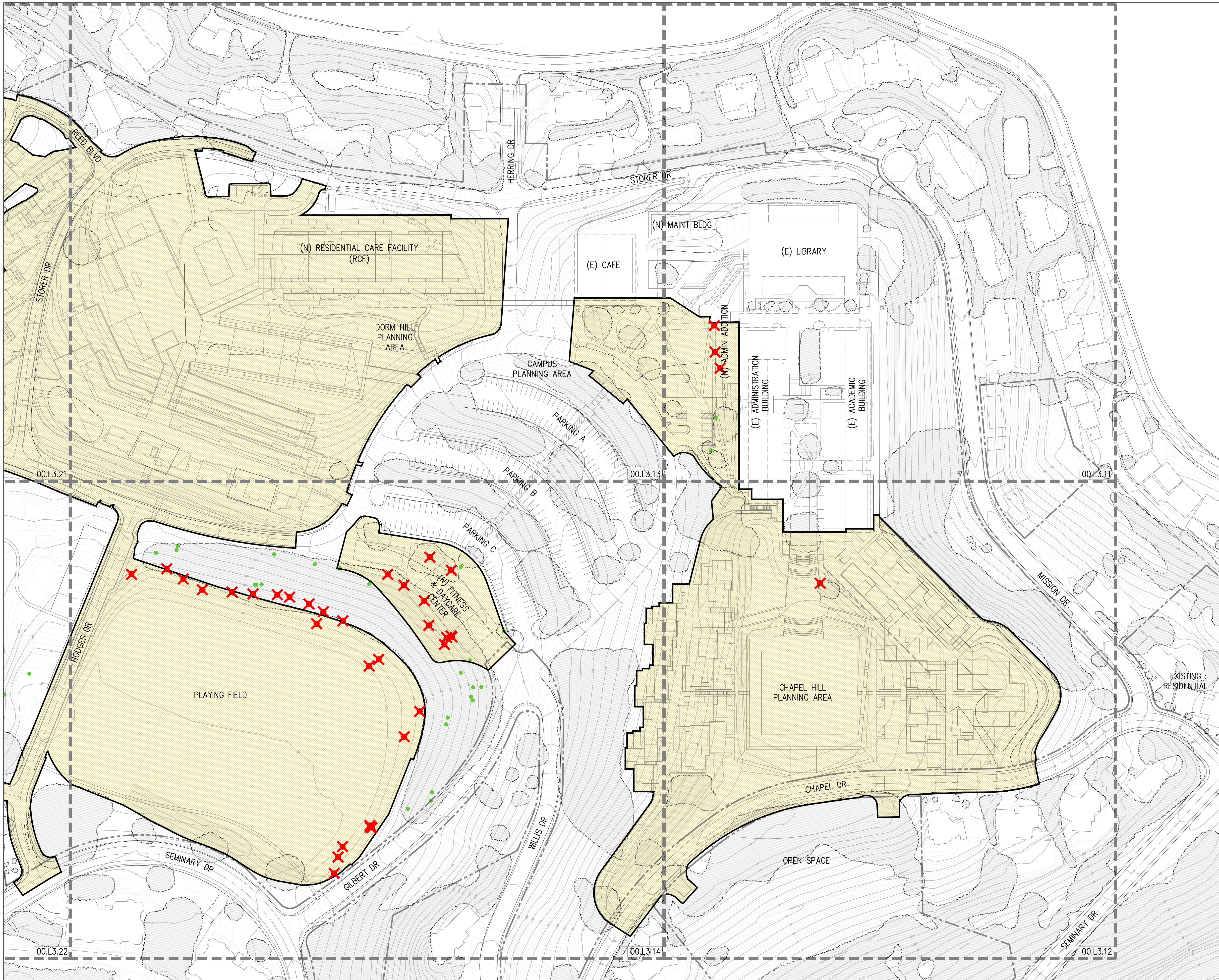
1" = 80'

BLDG. TYPE

00

SHEET NO.

L3.10



FOREST MANAGEMENT NOTES:

The Seminary site includes existing stands of native and non-native tree species, including coast live oak, California buckeye, Monterey pine, and acacia. Protected trees designated for removal, within the limits of grading and immediately adjacent areas, are identified on Sheets L3.11-L3.14 and Sheets L3.21-L3.24. Protected trees will be replaced at a ratio of 3:1 consistent with the Marin County Tree Ordinance (See Sheets L1.10A and L1.20A for plant lists and quantities). Other trees, consisting of predominantly non-native species within the shaded canopy symbol, generally occur outside the limits of grading.

Management goals for trees beyond the construction limits are to promote native tree establishment and improving the health of the existing trees. The other critical goal is to reduce public safety risks for both fire and structural failure of trees near public use and residential areas. Dead and dying trees will be removed and retained trees pruned to limit fire hazards (See Vegetation Management Sheets L4.10 and L4.20). Non-native, pyrophytic, and invasive species such as acacia will be removed. The stands of Monterey pine, which are at the end of their healthy lifespan and now pose significant fire and safety risks, will be removed as advised by a qualified arborist and the County Fire Marshall.

LEGEND

- EXISTING OAK TREE TO REMAIN
- ✕ PROTECTED TREE TO BE REMOVED
- EXISTING TREE CANOPY
- APPROXIMATE EXTENT OF GRADING

PROTECTED TREES TO BE REMOVED: 89

SEE 40 SCALE PLANS FOR TREE IDENTIFICATION NUMBERS, SPECIES AND DIAMETER AT BREAST HEIGHT

SEE ARBORIST REPORT FOR DETAILS

