

# Kentfield Planning Advisory Board

P.O. Box 304, Kentfield, California 94914

## Agenda: Wednesday, July 22, 2020, 7:00 P.M. Via Video Conferencing

KPAB Chair Anne Petersen invites you to a scheduled Zoom meeting. Join Zoom Meeting  
Join Zoom Meeting

<https://us02web.zoom.us/j/3842824437>

Meeting ID: 384 282 4437

One tap mobile

+16699006833,,3842824437# US (San Jose)

+13462487799,,3842824437# US (Houston)

Meeting ID: 384 282 4437

*The public is invited to speak on any item on the agenda or at open time.*

**7:00** Public Open Time and Review of July 8, 2020 Minutes

### **7:05. Marin Healthcare District Design Review/Ambulatory Services Bldg**

The Healthcare District proposes

- A new five-story, 100,000 sf Ambulatory Services Building (ASB) with ground level footprint totaling approximately 20,000 square feet;
- A new six-story parking structure with footprint about 20,000 sf, constructed adjacent to the existing parking structure on an existing surface parking lot. This structure would displace 75 at-grade parking stalls and provide 417 replacement parking stalls; and
- A pedestrian bridge connecting the two parking structures with the new ASB.

The proposed ASB would reach up to 74 feet above surrounding grade with rooftop equipment up to 86 feet above grade. The parking structure would be about 70 feet above surrounding grade.

Other proposed site changes include: site grading to accommodate the new parking structure and ASB; tree removal and planting; on- and off-site landscaping; lighting, wayfinding and identification signs; and solar on the garage roof.

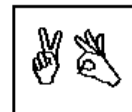
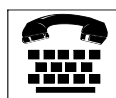
Project plans and other documents at:

[https://www.marincounty.org/depts/cd/divisions/planning/projects/kentfield/marin-healthcare-district\\_dr\\_p2787\\_kf](https://www.marincounty.org/depts/cd/divisions/planning/projects/kentfield/marin-healthcare-district_dr_p2787_kf)

### **8:15. Updates, communications, and future agenda items.**

Agenda information: Anne Petersen, 415-453-1372

*The Kentfield Planning Advisory Board meets 2<sup>nd</sup> and 4<sup>th</sup> Wednesdays at 7 PM, in the College of Marin Student Center. The Board reviews and makes recommendations to the County on projects in the unincorporated Kentfield area, excluding Kent Woodlands. Recommendations are advisory only.*



In accordance with the Americans with Disabilities Act, if you need special assistance (i.e. auxiliary aids or services) in order to participate in this public meeting, please contact the Clerk of the Board of Supervisors by calling (415) 499-6172 (TTY) or (415) 499-7331 (voice) **at least five (5) business days prior to the meeting.**