

Kentfield Planning Advisory Board

P.O. Box 304, Kentfield, California 94914

Agenda: Wednesday, March 27, 2019, 7:00 P.M.

Deedy Lounge, Student Center, College of Marin

The public is invited to speak on any item on the agenda or at open time.

7:00 Public Open Time and Review of February 13, 2019 Minutes

7:05. 7 Cedar Ave Variance (Kathleen Kilgariff)

Variance request to construct a new 3,268 s.f. residence on an 8,230 s.f. lot, resulting in a 39.7 percent floor area ratio where maximum permitted is 30 percent. Building would be up to 25 feet, 9 inches high with following setbacks: 25 feet from north front 6 feet from east and west sides, 19 feet, 8 inches from rear line.

7:40. 14 Hotaling Court Design Review (Kathleen Kilgariff)

Application to construct a new 837 s.f. detached accessory building and 888 s.f. attached garage addition, resulting in 9,463 s.f. of floor area and a floor area ratio of 29.8 percent on the 31,674 s.f. lot. The accessory building would be 16 feet high with these setbacks: 134 feet, 11 inches from south front, 15 feet from east side, 105 feet from west side, 13 feet from north rear. The garage addition would be up to 10 feet, 6 inches high with these setbacks: 38 feet, 5 inches from south front, 32 feet, 11 inches from east side, 115 feet from west side, 89 feet, 10 inches from north rear. Other site changes include retaining walls up to 6 feet tall.

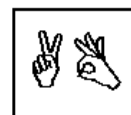
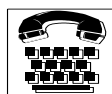
8:00. Murray Avenue (Cooney) Design Review (Immanuel Bereket)

Design Review and Tree Removal approvals asked to construct a new 8,576 s.f. residence on a vacant 2.72 acre lot. The building would be up to 31 feet, 25 inches high with these setbacks: 103 feet from east front, 111 feet, 7 inches from north side, 31 feet, 7 inches from south side, and 281 feet from the west rear. Also proposes removing two trees classified as protected under County Code.

8:15 Updates, communications, and future agenda items.

Agenda information: Anne Petersen, 415-453-1372

The Kentfield Planning Advisory Board meets 2nd and 4th Wednesdays at 7 PM, in the College of Marin Student Center. The Board reviews and makes recommendations to the County on projects in the unincorporated Kentfield area, excluding Kent Woodlands. Recommendations are advisory only. (Public notices online: <https://www.marincounty.org/depts/cd/divisions/planning/projects>)



In accordance with the Americans with Disabilities Act, if you need special assistance (i.e. auxiliary aids or services) in order to participate in this public meeting, please contact the Clerk of the Board of Supervisors by calling (415) 499-6172 (TTY) or (415) 499-7331 (voice) at least five (5) business days prior to the meeting.