

Kentfield Planning Advisory Board

P.O. Box 304, Kentfield, California 94914

Agenda: Wednesday, June 28, 2017, 7:00 P.M.

Deedy Lounge, Student Center, College of Marin
& 10891 Sunshine Coast Hwy, Powell River, BC, Canada

The public is invited to speak on any item on the agenda or at open time.

7:00 Public Open Time and Review of May 10, 2017 Minutes

7:05. Robino Design Review, 127 Hill Drive (Alton)

Second transmittal for this proposal to construct a new 195 s.f. addition on the third floor of an existing residence in Kentfield. The proposed building would be approximately 30 feet high above surrounding grade and have the following setbacks from exterior walls to property lines: more than 100 feet from the northern front line, about 80 feet from the eastern side line, more than 100 feet from the western side line, more than 100 feet from the southern rear line.

Design Review approval is required because the project would result in a total floor area greater than 3,000 s.f. Plans are online at:

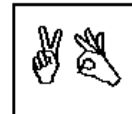
http://www.marincounty.org/depts/cd/divisions/planning/projects/kentfield/robino_vr_dr_p1655_kf

7:30. Updates, communications, and future agenda items

- Update on CSA 17 budget.
- Current flood control proposal for Corte Madera Creek

Agenda information: Anne Petersen, 415-453-1372

The Kentfield Planning Advisory Board meets 2nd and 4th Wednesdays at 7 PM, in the College of Marin Student Center. The Board reviews and makes recommendations to the County on projects in the unincorporated Kentfield area, excluding Kent Woodlands. Recommendations are advisory only. (Public notices online: http://www.co.marin.ca.us/depts/CD/Main/comdev/CURRENT/notices/public_notices.htm)



In accordance with the Americans with Disabilities Act, if you need special assistance (i.e. auxiliary aids or services) in order to participate in this public meeting, please contact the Clerk of the Board of Supervisors by calling (415) 499-6172 (TTY) or (415) 499-7331 (voice) **at least five (5) business days prior to the meeting.**