

Kentfield Planning Advisory Board

P.O. Box 304, Kentfield, California 94914

Agenda: Wednesday, January 13, 2016, 7:30 p.m.
Deedy Lounge, Student Center, College of Marin

The public is invited to speak on any item on the agenda or at open time.

7:30 Open Time and Review of Minutes of October 28, 2015

7:35. Marin Healthcare Hospital Replacement Design Review (Tejirian)

The KPAB will review final plans for the proposal to construct a new hospital building to be added on to the west wing of the existing Marin General Hospital structure. The new hospital building, which is known as the hospital replacement building (HRB) would be constructed on an approximately 3.5 acre portion of the 19.7 acre campus. The existing hospital building is 93,325 square feet and, of that total, 540 square feet would be demolished. The HRB (new hospital) would be approximately 253,159 square feet in size. When combined with the existing development, the total building area would be approximately 439,833 square feet, resulting in an approximate floor area ratio on the site of 51 percent. The roof of the HRB would reach a maximum height of approximately 70 feet above surrounding grade and the exterior walls would be located 60 feet from the front property line along Bon Air Road, and 95 feet from the eastern side line. A tree removal permit, sign review, and temporary use permit are also included in this application. A number of changes are also proposed, or are being done, to the roadway, entry and exits to the campus, bus arrangements, turn lanes, and parking arrangements along Bon Air. Darren Graves of the hospital consulting team will be at this meeting to assist with the discussion.

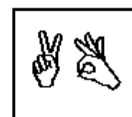
A companion application for a new parking garage on the north hillside was approved earlier.

The focus of this meeting is for the KPAB to prepare comments and recommendations for the Planning Commission hearing on this project, which will be held on Monday, February 8, 2016 at the Marin County Civic Center. The project has been deemed complete, with conditions, by the Department of Public Works.

Directions: Deedy Lounge is in the lowest floor of the Student Center, in the corner of the building nearest the creek and the new science building. You may have to go through the cafeteria. Look for sign on door.

Agenda information: Anne Petersen, 415-453-1372

The Kentfield Planning Advisory Board meets 2nd and 4th Wednesdays at 7:30 PM, in the College of Marin Student Center. The Board reviews and makes recommendations to the County on projects in the unincorporated Kentfield area, excluding Kent Woodlands. Recommendations are advisory only. (Public notices online: http://www.co.marin.ca.us/depts/CD/Main/comdev/CURRENT/notices/public_notices.htm)



In accordance with the Americans with Disabilities Act, if you need special assistance (i.e. auxiliary aids or services) in order to participate in this public meeting, please contact the Clerk of the Board of Supervisors by calling (415) 499-6172 (TTY) or (415) 499-7331 (voice) at least five (5) business days prior to the meeting.