

Kentfield Planning Advisory Board

P.O. Box 304, Kentfield, California 94914

Agenda: Wednesday, January 14, 2015

7:30 p.m., Deedy Lounge, Student Center, College of Marin

The public is invited to speak on any item on the agenda or at open time.

7:30 Open Time and Review of Minutes of December 10, 2014

7:35 Kapur Variance, 30 Hanken Drive (Jocelyn Drake)

This is the second meeting to review this application for a setback variance in order to allow for construction of a single-family addition between an existing garage and an existing residence, and to construct a second-story addition above the garage and residence. The project would add 937 square feet to the 2,351 square foot home and the garage, increasing the FAR from 19 % to 26 %. The exterior walls would have the following minimum setbacks from property lines: 25 feet from the east front, 9 feet and 4 inches from the west rear, about 100 feet from the west side, and 7 feet and 6 inches from the east side. The proposed second story addition would have a maximum height of approximately 26 feet and 8 inches. The second-floor addition would be a maximum 26 feet, 8 inches high, below the 30 foot maximum limit. The variance need is created by the proposed 2 foot, 6 inch intrusion of the second-floor garage addition into the 10 foot setback, to create a master bedroom.

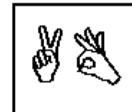
Story poles have been put up and new information will be presented at the meeting based on the earlier KPAB meeting on this project – on December 10.

8:15 Reports and Updates

Directions: Deedy Lounge is in the lowest floor of the Student Center, in the corner of the building nearest the creek and the new science building. You may have to go through the cafeteria. Look for sign on door.

Agenda information: Anne Petersen, 415-453-1372

The Kentfield Planning Advisory Board meets 2nd and 4th Wednesdays at 7:30 PM, in the College of Marin Student Center. The Board reviews and makes recommendations to the County on projects in the unincorporated Kentfield area, excluding Kent Woodlands. Recommendations are advisory only. (Public notices online: http://www.co.marin.ca.us/depts/CD/Main/comdev/CURRENT/notices/public_notices.htm)



In accordance with the Americans with Disabilities Act, if you need special assistance (i.e. auxiliary aids or services) in order to participate in this public meeting, please contact the Clerk of the Board of Supervisors by calling (415) 499-6172 (TTY) or (415) 499-7331 (voice) at least five (5) business days prior to the meeting.