

Kentfield Planning Advisory Board

P.O. Box 304, Kentfield, California 94914

Agenda: Wednesday, November 12, 2014

7:30 p.m., Deedy Lounge, Student Center, College of Marin

The public is invited to speak on any item on the agenda or at open time.

7:30 Open Time and Review of Minutes of October 22, 2014

7:35 Marin Hospital District Design Review and Temporary Use Permit (Tejirian)

Request for Design Review approval for construction of a six level (five-story) parking structure and a new parking lot, a Tree Removal Permit for the removal of 48 protected trees, as well as a Temporary Use Permit to allow two temporary trailers to be used for the duration of the construction project. The parking structure would have a building footprint of approximately 24,775 square feet and provide a total of 133,300 square feet of parking and related features to accommodate 415 vehicles.

The parking structure would reach a maximum height of approximately 68 feet above surrounding grade and have a minimum setback of approximately 210 feet to Bon Air Road. The project also includes the construction of an 85 vehicle parking lot located directly adjacent (northwest) to the parking structure.

The parking lot would have a minimum setback of approximately 80 feet (at its closest point) to Bon Air Road.

Other project elements associated with the Design Review include the demolition of existing ancillary structures within the project area, grading, widening of the entrance to the hospital and internal roadways from Bon Air Road, pole lighting associated with the widening of the entrance to the hospital, internal roadways, and parking structure/parking lot, landscaping, and a new traffic signal on Bon Air Road at the entrance to the hospital.

The proposed project is part of a multi-phased replacement and expansion plan. Plans and EIR are on the Healthcare District website: <http://www.marinhealthcare.org/marin-general-hospital/hospital-replacement-project>.

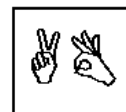
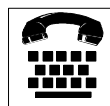
8:00 Reports and Updates

Directions: Deedy Lounge is in the lowest floor of the Student Center, in the corner of the building nearest the creek and the new science building. You may have to go through the cafeteria. Look for sign on door.

Agenda information: Anne Petersen, 415-453-1372

The Kentfield Planning Advisory Board meets 2nd and 4th Wednesdays at 7:30 PM, in the College of Marin Student Center. The Board reviews and makes recommendations to the County on projects in the unincorporated Kentfield area, excluding Kent Woodlands. Recommendations are advisory only. (Public notices online:

http://www.co.marin.ca.us/depts/CD/Main/comdev/CURRENT/notices/public_notices.htm)



In accordance with the Americans with Disabilities Act, if you need special assistance (i.e. auxiliary aids or services) in order to participate in this public meeting, please contact the Clerk of the Board of Supervisors by calling (415) 499-6172 (TTY) or (415) 499-7331 (voice) at least five (5) business days prior to the meeting.